



**MULTIPOWER  
INTERNATIONAL, INC.**

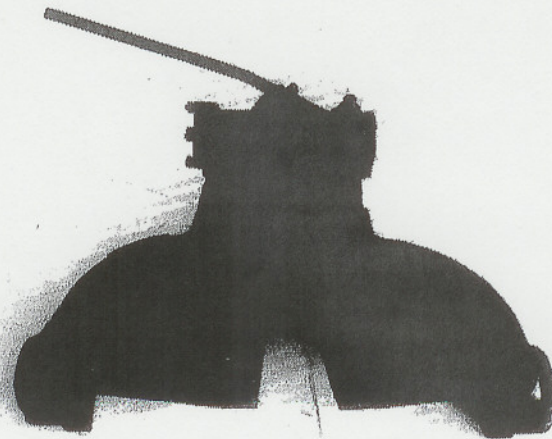
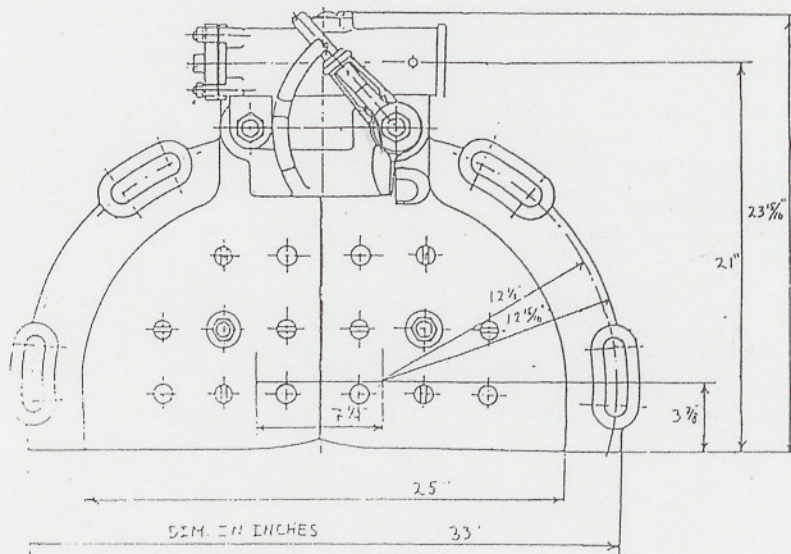
PART NO: 420

DRAWING NO:

DESCRIPTION

**AIR OPERATED BUTTERFLY FIREDOOR TYPE J1**

The type J1 Butterfly firedoor is designed for use on stoker-fired locomotives on which the firing apparatus is mounted partially within the cab of the locomotive such as Standard Stoker types BK, HT, and HT1. This firedoor is similar to a Franklin No.8 as applied to locomotives using the aforementioned models of stokers. With minor modifications it will replace various firedoors. It comes with frame, handle, foot pedal, etc. The doors, frame, and cylinder are cast iron.



P. O. Box 197, Towaco, NJ 07082  
Tel. (973) 331-7242