



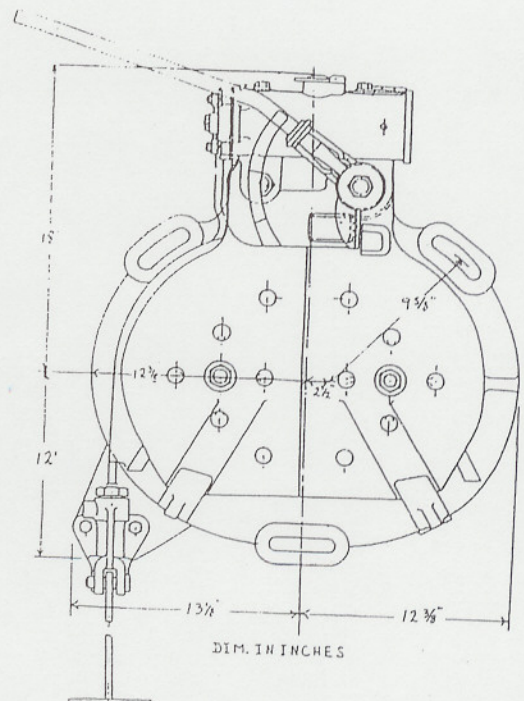
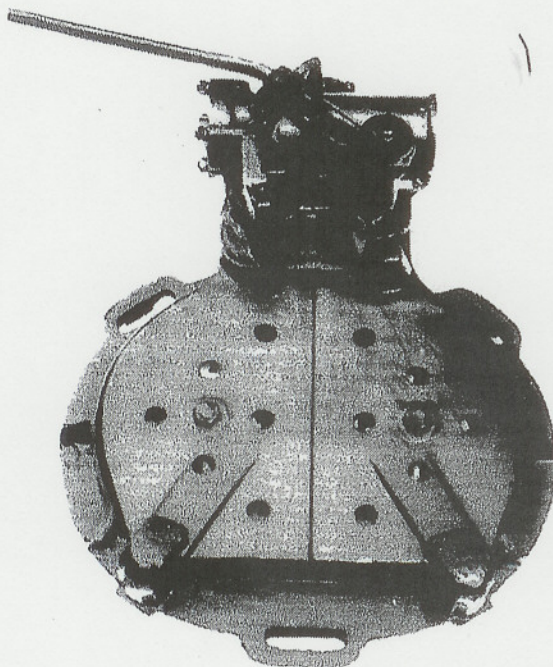
**MULTIPOWER  
INTERNATIONAL, INC.**

PART NO: 400  
DRAWING NO: JT 54.211.00

DESCRIPTION

**AIR OPERATED BUTTERFLY FIREDOOR TYPE S1**

The type S1 Butterfly firedoor is designed for use on hand-fired locomotives and those stoker-fired engines on which the firing apparatus is mounted totally within the firebox, such as Standard Stoker types B and MB. This firedoor is similar to a Franklin No.8A. With minor modifications, it will replace various sizes and types of firedoors. It comes complete with frame, handle, foot pedal, etc. The doors, frame and cylinder



P. O. Box 197, Towaco, NJ 07082  
Tel. (973) 331-7242