



**MULTIPOWER
INTERNATIONAL, INC.**

PART NO: 106 - 108 - 110
DRAWING NO: JT 1.332.000

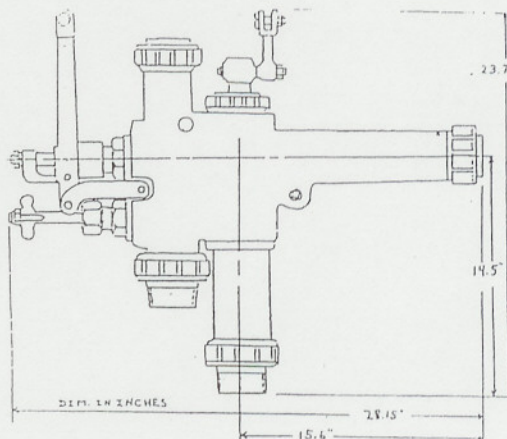
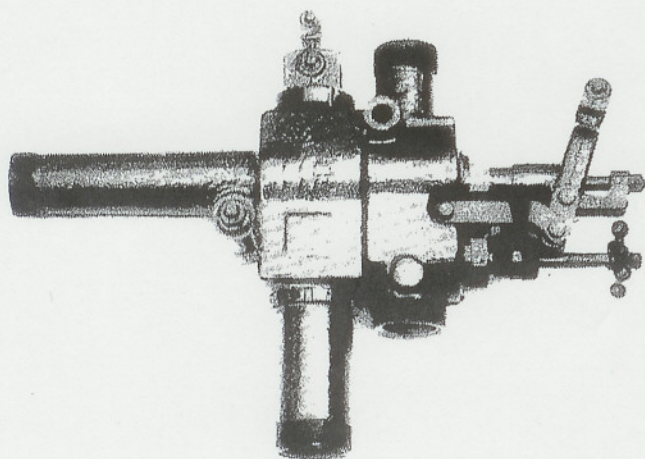
DESCRIPTION

LIFTING INJECTORS TYPE X

The Type X Lifting Injector is available in three sizes: 6, 8, and 10. This injector is similar in design to the Nathan Simplex type BH. With minor piping modifications, the Type X will replace Nathan, Edna, Ohio and Sellers lifting injectors. The injector body and all internal parts are cast bronze.

Size	Capacity gal/hr		Pipe Connection Sizes		
	@200 psi	Steam \	Suction	Delivery	Overflow
6	1200	1-1/4	1-1/4	1-1/4	1-1/4
8	2100	1-1/2	2	2	2
10	3500	2	2-1/2	2	2-1/2

When not specified, pipe connections will be supplied blank to be threaded for steel pipe or bored for copper pipe.



P. O. Box 197, Towaco, NJ 07082
Tel. (973) 331-7242