



**MULTIPOWER
INTERNATIONAL, INC.**

PART NO: 111 - 165

DRAWING NO:

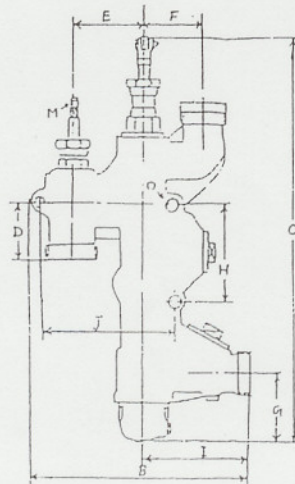
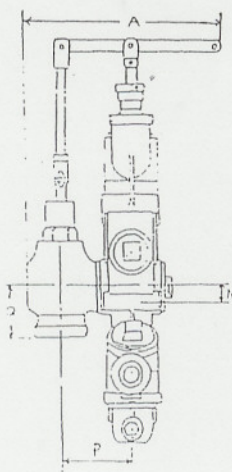
DESCRIPTION

NON-LIFTING INJECTORS TYPE FX

The Type FX non-lifting injector is available in two sizes: 11 and 16.5. This injector is similar in design to the Nathan type 1918, except that the steam (starting) valve is an integral part of the injector, operated via a lever through the floor of the cab in the same manner as a Nathan type 4000. The Type FX will replace Nathan, Edna, Chicago and Sellers non-lifting injectors, usually without piping modification. The overflow valve can be moved to allow the injector to be mounted on either the right or left side of the locomotive. The injector body and all internal parts are cast bronze.

Size	Capacity gal/hr @ 200 PSI	Pipe Connection Sizes			
		Steam	Suction	Delivery	Overflow
11	3950	2	2-1/2	2	2-1/2
16.5	6350	2-1/2	3	2- 1/2	3

When not specified, pipe connections will be supplied blank to be threaded for steel pipe or bored for copper pipe.



FX 16.5 FX 11

	FX 16.5	FX 11
A	12.4	16.3
B	34.4	14.2
C	12.5	30
D	4.6	2.7
E	6	5.5
F	5.1	4.3
G	5.6	5.4
H	8	6
I	9	7.5
J	11.4	7.5
M	.63	.5
N	1	2.25
O	1	1
P	5	3.75
Q	4.2	3.3

DIM IN INCHES

P. O. Box 197, Towaco, NJ 07082
Tel. (973) 331-7242