



**MULTIPOWER  
INTERNATIONAL, INC.**

PART NO: 430

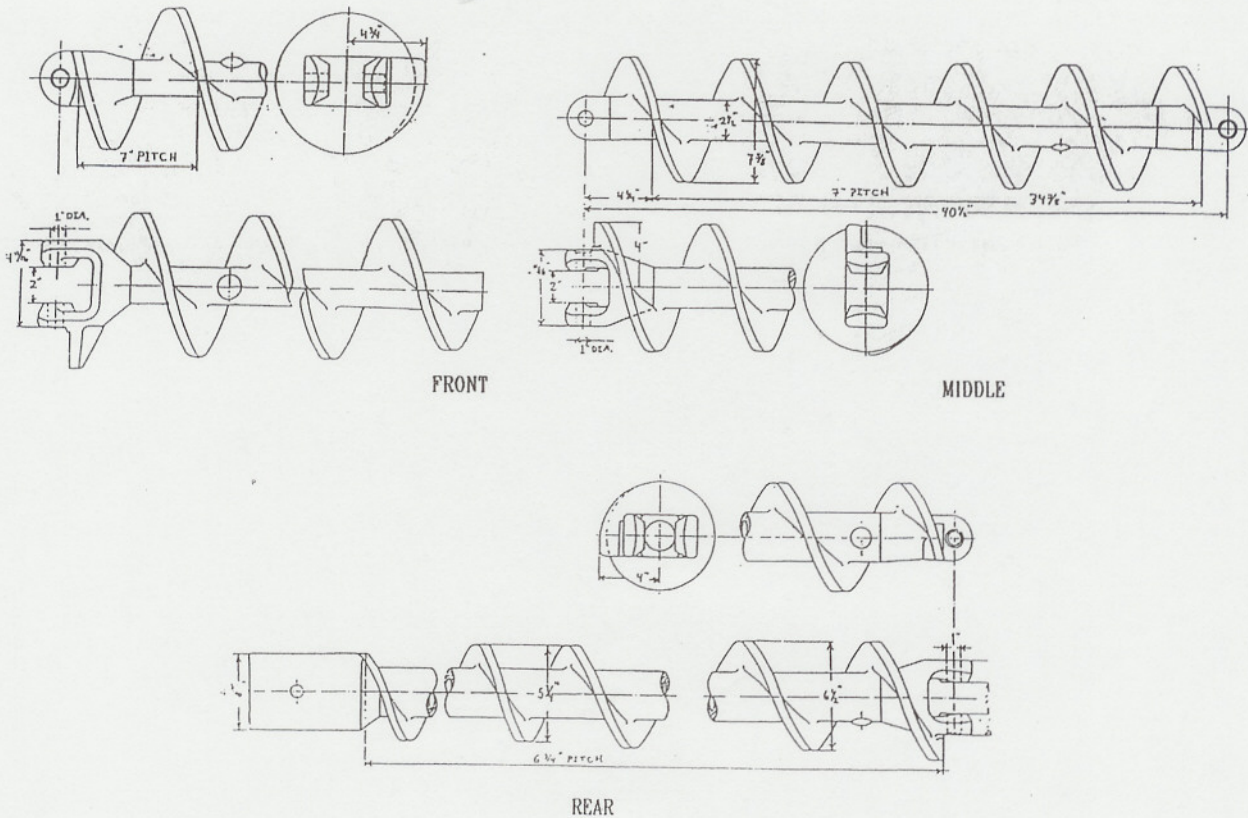
DRAWING NO:

DESCRIPTION

STOKER SCREWS

A variety of stoker screws are available. All are similar in design to Standard Stoker screws and will replace same with little or no modification. Custom lengths will be quoted upon application. All are cast steel.

	Rear (stoker trough)	Middle	Front
Lenghts:	100"	40-1/2"	43"
	88"	38-1/2"	
	64-1/2"	31-1/2"	
	64"	26-3/4"	
	24"		



DIMENSIONS IN INCHES

P. O. Box 197, Towaco, NJ 07082

Tel. (973) 331-7242