



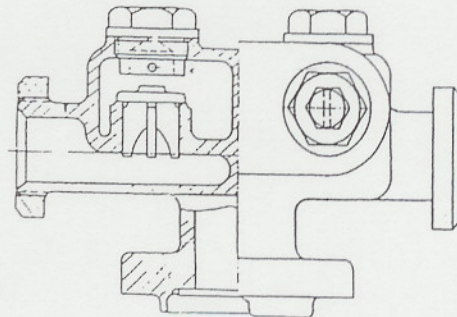
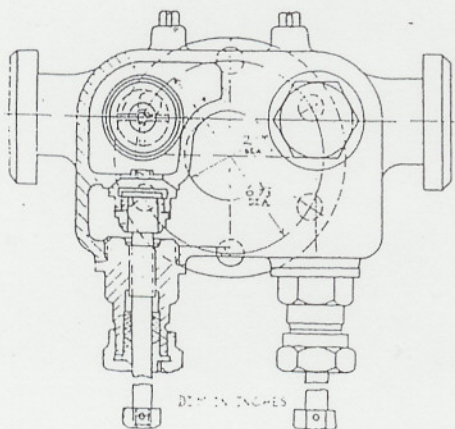
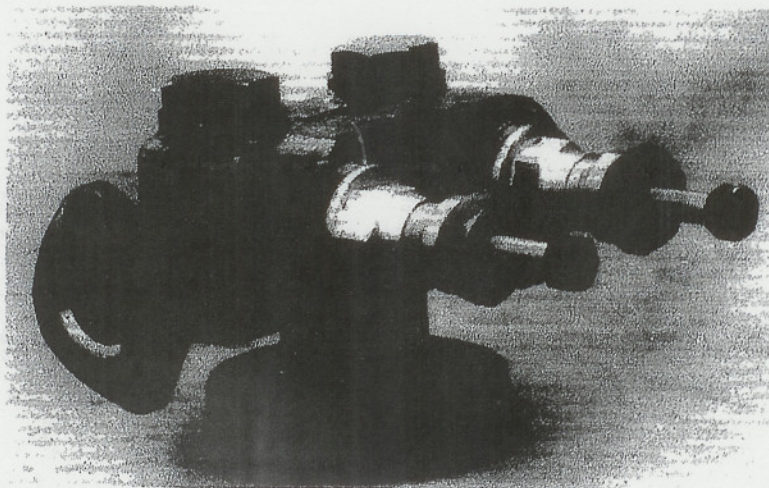
**MULTIPOWER
INTERNATIONAL, INC.**

PART NO: 605
DRAWING NO: JT 17.333.00

DESCRIPTION

DOUBLE BOILER CHECK VALVE TYPE 50

The Type 50 double boiler check valve is a top-mounted unit bolted to the boiler via a flange connection (see drawing). It is equipped with stop valves to enable servicing of the check valves or associated piping while under pressure. The Type 50 will replace a variety of valves similar to top mounted check valves made by Nathan, Edna, Hancock and Sellers. It is suitable for use with injectors of capacities up to 5000 gallons per hour. The check valve body is cast steel; the internal parts are cast bronze.



P. O. Box 197, Towaco, NJ 07082
Tel. (973) 331-7242